

# BOLT<sup>®</sup>

CRANES & RIGS

FASTEST CAMERA ROBOT IN THE WORLD!



PAYLOAD  
CAPACITY (KG)



MAXIMUM  
LENS HEIGHT (M)

FASTEST MOTION CONTROL ARM  
IN THE WORLD!

INTEGRATED CAMERA CABLING  
THROUGH ARM

MOVES 4.5M/S  
ON TRACK

POWERFUL, HIGH TORQUE  
LENS MOTORS

The Bolt High-Speed Cinebot is the fastest of its kind – capturing images in crisp focus that would be impossible by hand or any other method. Whether shooting commercials, tabletop work, film or television, the Bolt adds an entirely new perspective to filming.



A Nikon Company



MARK ROBERTS MOTION CONTROL

# BOLT SPECIFICATIONS



## TURNTABLES

Synchronised motion with external triggers and model movers for extreme precision timing.



## PORTABLE

Portable, lightweight robotic unit, designed to be set-up and ready for shooting in under an hour.



## TIMECODE | LIGHTING

Trigger from timecode. Control DMX Lighting.



## TIMELAPSE

Create incredible timelapse with dynamic movement and feel.



## REPEATABLE

Every camera move under complete control – precisely repeatable.



## TARGET TRACKING

Define location of your object in space, to simplify any complex move.



## LENS CONTROL

High speed, precise control of zoom, iris & lens. Fastest & most powerful motors in the world.



## MAYA

Take moves planned in Maya and feed them into the Bolt – or interface to augmented or virtual reality in real-time.

## OPERATING ENVELOPE

<b>Maximum Height</b>	3.5m / 11'5"
<b>Lowest Position</b>	0m / 0'
<b>Maximum reach (from rotate centre)</b>	2.0m / 6'6"

## RIG PERFORMANCE

<b>Track</b>	Unlimited range of travel @ 4.5m/s
<b>Rotate</b>	+/- 160° range of travel @ 240°/s
<b>Lift</b>	+/- 137° range of travel @ 240°/s
<b>Arm</b>	+/- 150° range of travel @ 300°/s
<b>Pan</b>	+/- 270° range of travel @ 350°/s
<b>Tilt</b>	+/- 120° / -105° range of travel @ 350°/s
<b>Roll</b>	+/- 270° range of travel @ 870°/s

## PRACTICAL SHOOTING SPEEDS

<b>Vertical</b>	1m (3'3") vertical movement / 0.5s
<b>Horizontal</b>	1m (3'3") horizontal movement / 0.5s
<b>Arc</b>	Complete 180° arc with 75cm (2'5") radius / 1.5s Complete 180° arc with 45cm (2'5") radius / 1s

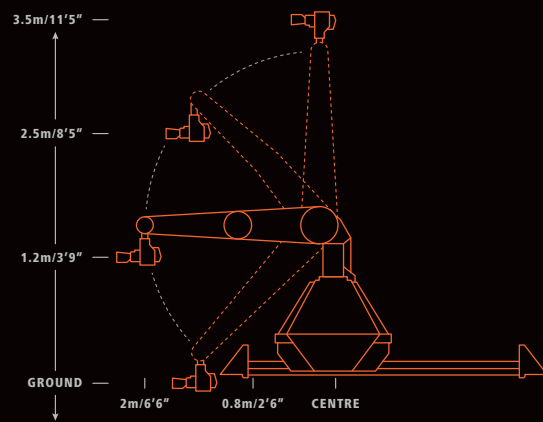
## RIG WEIGHTS

<b>Bolt Rig</b>	600kg / 1323lbs
<b>Maximum camera payload</b>	20kg / 44lbs

Note: counter weights may be required depending on the shot and length of track

## POWER CONNECTION

<b>Power requirements</b>	3x 400 volts, 32 amps, 50-60Hz
<b>Generator</b>	3k VA (Bolt) 14k VA (Bolt on track)



MARK ROBERTS MOTION CONTROL

MARK ROBERTS MOTION CONTROL

TELEPHONE: +44 (0)1342 838000

EMAIL: [info@mrmoco.com](mailto:info@mrmoco.com)

[www.mrmoco.com/bolt](http://www.mrmoco.com/bolt)

A Nikon Company

