




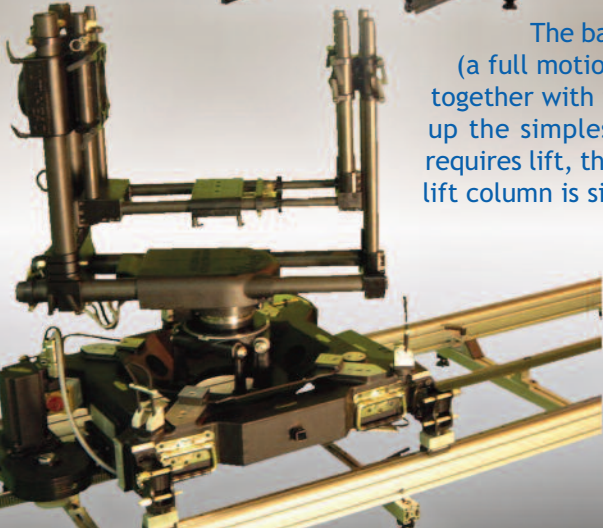
THE TRANSFORMER OF MOTION CONTROL RIGS

# The Modula' Motion Control Rig

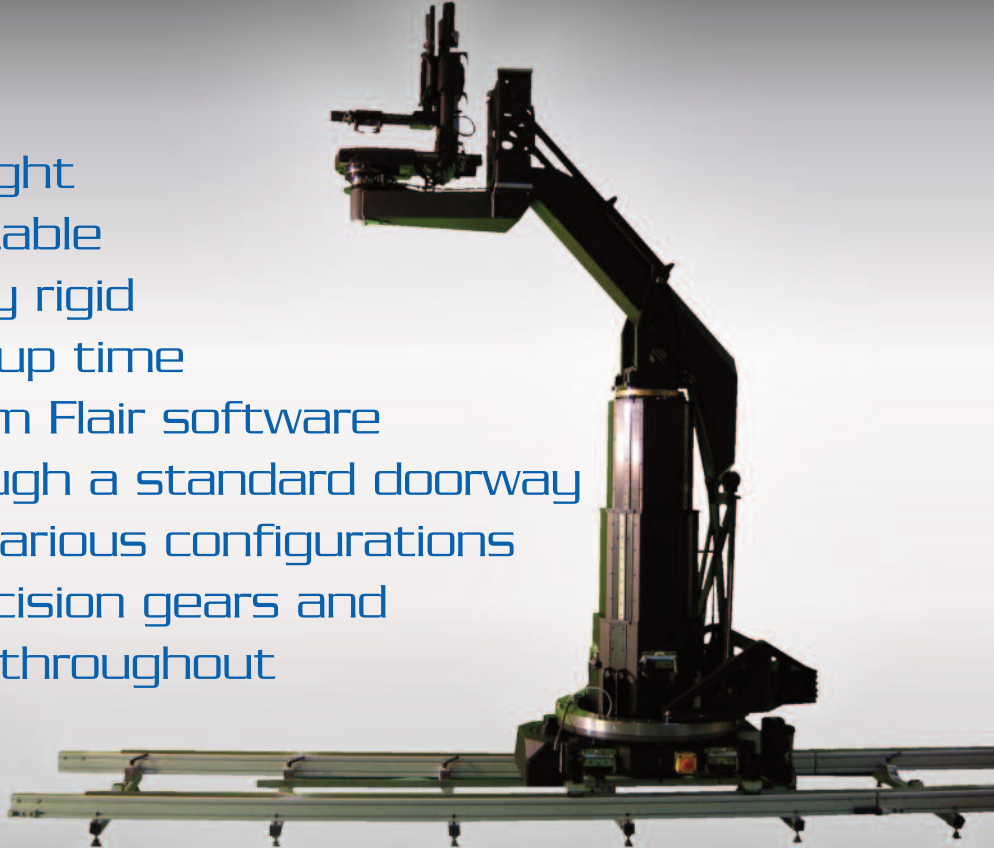
- Low Cost
- Light-weight
- Very portable
- Extremely rigid
- Fast set-up time
- Runs from Flair software
- Fits through a standard doorway
- Used in various configurations
- Uses precision gears and bearings throughout



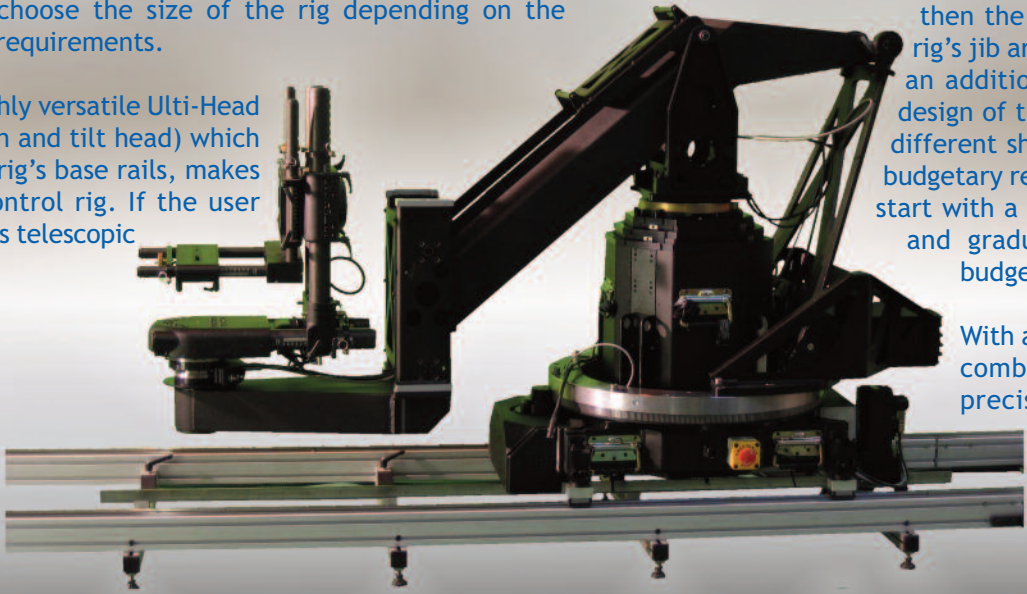
The Modula' rig is a complete motion control concept allowing the user to pick and choose the size of the rig depending on the shoot requirements.



The basis is the highly versatile Ulti-Head (a full motion control pan and tilt head) which together with the Modula' rig's base rails, makes up the simplest motion control rig. If the user requires lift, the Modula rig's telescopic lift column is simply added.



If additional height or reach is required then the head can be mounted on the rig's jib arm which adds extra height and an additional rotate axis. The modular design of the system is not only good for different shoot requirements but also for budgetary requirements, as companies can start with a simple head and track system and gradually expand the kit as the budget and need arises.



With a tremendous degree of motion combined with high speeds and precision movements, the Modula Rig system is ideal for location and studio work.



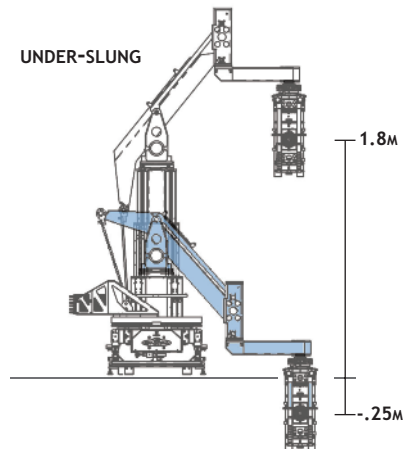
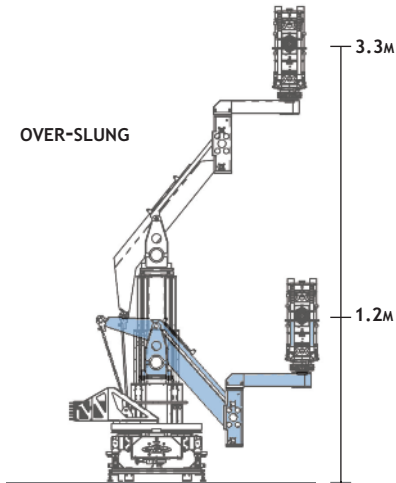
www.mrmoco.com

# Mark Roberts Motion Control

MRMC has, since 1966, continually set new standards in the industry and are the world leader in the design and manufacture of motion control technology. Winner of an Academy Award for Technical & Engineering Achievement.



## Modula' Rig Technical Specifications



### PERFORMANCE

Axis Name	Range of Travel	Maximum Speeds
Track	as required	3m per second
Lift	+3.3m to -.25m	.75m per second at camera
Rotate	unlimited	40° per second
Pan	unlimited	120° per second
Tilt	unlimited	120° per second

Lift Range of travel	2m of travel
Lift Drive Mechanism	Precision Ball Screw and telescopic column
Track Section	2' Precision Bearing dolly rail
Track Drive Mechanism	Rack & Pinion or optional Belt & Pulley
Camera load	35kg
Power Requirements	Single phase 110/240VAC 50/60Hz
Dimensions	Subject to requirements
Rig width	Fits through standard doorways

### FLAIR MOTION CONTROL SOFTWARE

All functions interface through industry standard Flair software offering the user a variety of filming techniques, including but not limited to:

- Repeat Moves
- Variable Camera Speed Moves
- Moving Step Animation
- CGI Import
- Scaled Moves
- Timecode Triggered Moves
- Video/HD Synchronised Moves
- Variable Speed Moves
- Stop Frame Animation
- Target Tracking
- CGI Export
- Rotated Moves
- Event Triggered Moves
- Timelapse

### KEY FEATURES AND OPTIONAL EQUIPMENT

- Runs on High Precision Bearing dolly rail or standard dolly rail.
- Unlimited upgrades available for improved performance and functionality.
- Fits through standard doorways.
- 3rd Axis (Roll).
- Range of model mover systems - to control auxiliary motors on props and lighting.
- MC Tools - translation software for CGI software packages and motion.
- Remote Hand wheels or Panbars - for recording the movement of individual axes.
- Head can be used as a remote head.
- Realtime camera XYZ positional data.

### WEIGHT

Base	34kg / 75lbs
Column	55kg / 121lbs
Arm	35kg / 77lbs
Head	25kg / 55lbs
Counter weights 10x10kg	100kg / 220lbs
Rotate ring	35kg / 77lbs



Mark Roberts Motion Control

Unit 4, Birches Industrial Estate, Imberhome Lane, East Grinstead, West Sussex RH19 1XZ  
Tel: 44 (0) 1342 334700 Fax: 44 (0) 1342 334701 info@mrmoco.com www.mrmoco.com