



Mark Roberts Motion Control

TELEPHONE
+44 (0)1342 838000

EMAIL
info@mrmoco.com

www.mrmoco.com

The Orbital

15 seconds, 8 angles, 1 click, job done.

Production Line Ethos, Bespoke Results

The Orbital is custom-made for taking high-volume product shots, bringing production-line simplicity and reliability to the world of product photography.

You need to be able to move quickly whether you're taking stills, 360 Spins, Multi-Row photography or shooting video. The Orbital offers a complete e-commerce solution, working hand-in-hand with our range of custom-built turntables and sliders to deliver the right results time and again.

High Quality, Low Costs

Whether you're shooting a cufflink or a car, the Orbital has it covered; no wobbles, no jerkiness.

Simply position the product and press the button – the Orbital moves through your preprogrammed rotations and camera positions with absolute precision. Images are then automatically passed through to your own post-processing system. Whether you're shooting 10,000 or 100,000 images, the Orbital revolutionises workflows and delivers major cost savings per image.

Automation, Not Aggravation

In-house solutions simply can't cut it in today's competitive e-commerce space. The Orbital does!

Bring the same level of automation you demand from your product and delivery lines to your product photography. The Orbital dramatically reduces set-up times by removing the need for the photographer to manually set up individual shots between each shutter movement.

minutes



vs

seconds



Average time per product for eight shots using in-house solutions

Average time per product for eight shots using the Orbital system

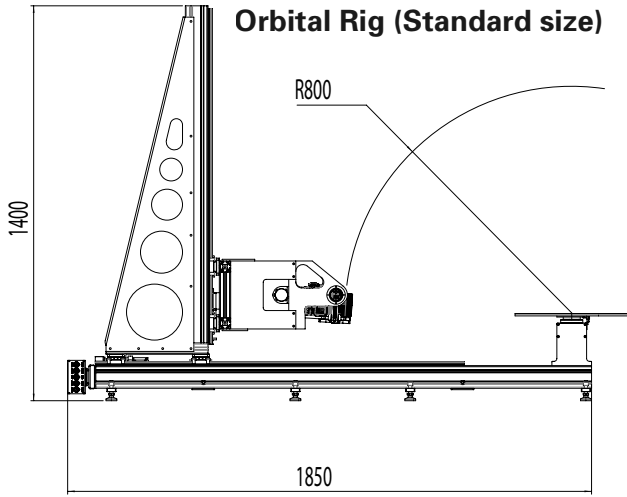
» Benefits

- One Take, Every Time! Created with cutting edge Oscar winning technology.
- Every Angle Covered: Allows for the control of camera height, distance, focus, exposure, zoom and shutter, while automatically rotating the selected turntable through user-defined rotations.
- Software done right: Every rig is supplied with Flair, our software controller system.
- Exacting Control: Every set of commands entered into Flair can be saved as a preset.
- Fully Automated: Taking a series of stills, 360 Spin/Multi-Row photographs or video can be turned into a fully automated process.
- Import Ready: All images captured can be imported directly into your Digital Asset Management or post-processing software.
- Bespoke products: Whatever your spec, we can supply you with the rig you need.
- Stiffness & Repeatability: Our rigs are completely rigid – the only elements that move are the product turntable and camera.

Mark Roberts Motion Control

Since 1966 MRMC has continually set new standards in the industry and are the world leader in the design and manufacture of motion control technology. Winners of an Academy Award for Technical & Engineering Achievement.

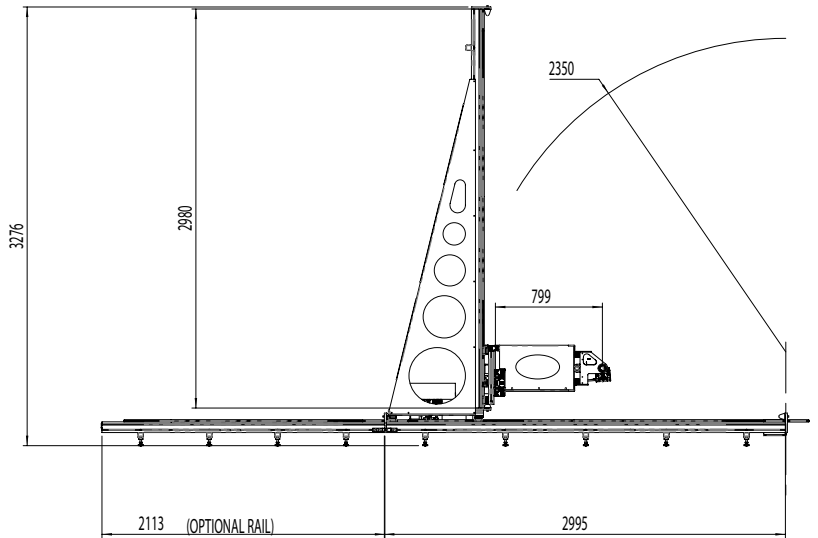




» The British team behind the Orbital system designs and builds camera rigs for Hollywood and has won an Oscar for its dedication to innovation and design excellence. While we can't promise your product photography will win an Academy Award, we can guarantee you'll get industry-beating equipment that will revolutionise the way you work. «



Orbital Rig (XL size)



ORBITAL: ACCESSORIES

All Orbital's zero-backlash turntables are controlled by robotic-grade Harmonic drive gearboxes, the same used in NASA's Apollo Lunar and Mars Explorational Rovers. These components were selected by our team so the system will work smoothly at full operating speed day after day, year after year.

Small Turntable

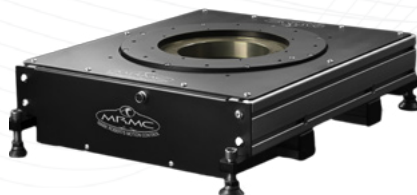
- Up to 20kg payload.
- Rotation Speed: 120°/s.
- Can position upside down to hang fashion accessories on, such as bags etc.
- Different size disks for a variety objects.

Large Turntable

- Up to 600kg payload.
- Rotation Speed: 90°/s.
- Centreless so cables or power can be fed through to appliances.

Medium Turntable

- Up to 200kg payload.
- Rotation Speed: 90°/s.
- Centreless so cables or power can be fed through to appliances.



Technical Specifications (Standard Orbital)

Weight	75kg
Camera Payload	+15kg
Maximum speed	130mm/sec
Arc of Motion	See Diagram
Dimensions	1395x1850x420mm
Supply voltage	60 volts / 110-240 volts AC
Accuracy	<0.02°
Resolution	<0.0002°